

DECOR

RHINESTONE MACHINES



**NO
AIR COMPRESSOR
REQUIRED**

**Available in
2-Color, 4-Color & 6-Color Models**

The finest in rhinestone setting equipment.

A Fast, Easy and Affordable Way To Create Custom Rhinestone Designs. Call for current price - it's less than you might think!



Now more than ever is a great time to make profits with Rhinestone Transfers. You can provide schools, organizations, clubs, businesses, teams and more with the unique look of rhinestone motifs. Rhinestone setting is now faster, easier, and more affordable with the DECOR line of Automatic Rhinestone Machines. Easily add the special touch of sparkle to any garment!

The DECOR Rhinestone Setter allows you to quickly and easily change the size and color of the stones. The large working area makes it perfect for large, intricate designs, or multiple smaller designs on the same transfer sheet.

After the DECOR has set the stones to transfer paper, you just heat-transfer the design to the garment – it's that easy! All rhinestone machines include the NCK 2D Rhinestone design software, which allows you to easily create your own designs in rhinestones or metal studs.

NEW Vacuum Pump

- Completely eliminates the need for an Air Compressor
- Extremely quiet!

DECOR Features

- Large 6.4 inch color touch-screen control panel
- Make design changes right on the screen
- 1000 design memory with thumbnail file retrieval
- High Speed production at up to 170 stones per minute
- Automatic repeat for multiple motif production
- Vacuum pump for pneumatic functions - no compressor required!
- Large design area
- 2, 4, or 6 colors and/or sizes of rhinestones automatically depending on machine model / more if you change the stones
- Accurate sensors prevent errors & misplacement of stones



2-Color



4-Color or 6-Color

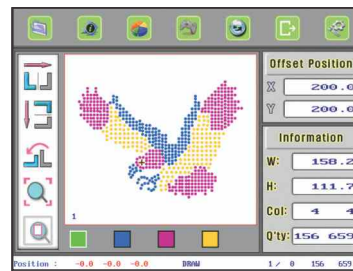


Three Year Warranty

All DECOR machines include a three year limited warranty and phone support for your peace of mind.

Large 6.4 inch Color LCD Touch Screen with TFT technology greatly improves on-screen image quality.

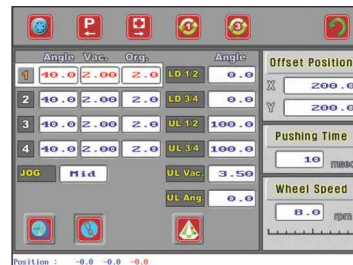
- User-friendly touch-screen menu for easy operation
- Import designs with a standard SD memory card
- LAN port for design transfer via FTP
- On-screen editing allows instant changes
- Large on board design memory holds up to 1,000 designs
- Design File Management with 10 folders each holding 100 designs



Design Editing



Design Storage



Design Settings

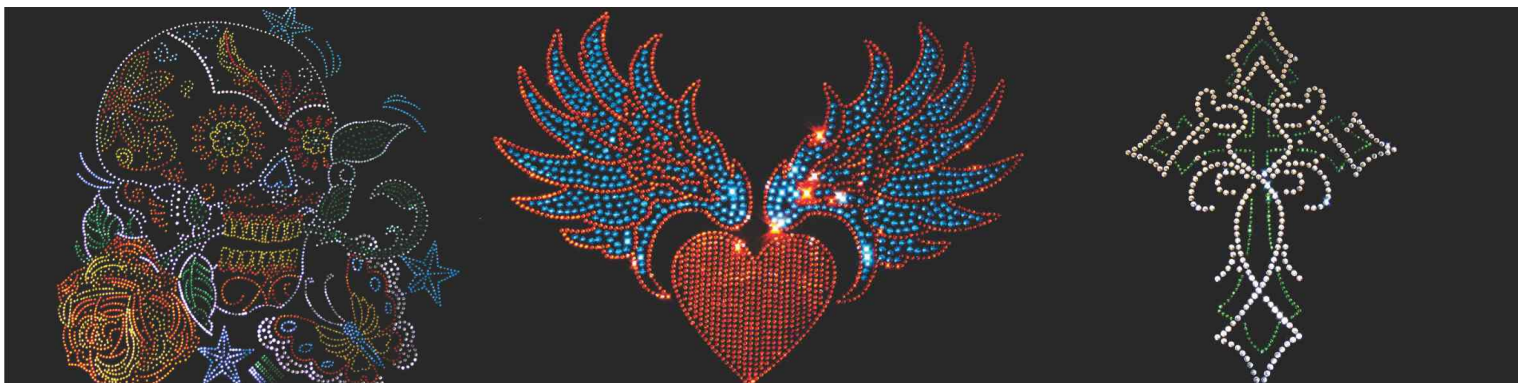


Design Information



SD Card Design Transfer

The SD memory card measures the size of a typical postage stamp. The SD Card allows the operator to transfer one design or hundreds to the DECOR equipment quickly and easily. An SD Card to USB adapter is also included, so you can choose to use a USB port or an SD Card port on your computer.



2-Color Machine Specifications

| | |
|---|--|
| Feeder Plate/Stone Sizes: | 6-10-12-16-20 ss / 2-3-4-5 mm |
| Hoppers: | 2 |
| Working Area: | 12.5 x 12.5 inches |
| Working Speed: | Max 170 pcs/min |
| Number of Colors/Sizes: | 2 Colors or Sizes |
| Internal Design Memory: | 1000 Designs |
| Data Interface: | SD Memory Card (Max 2GB), LAN |
| Air Requirements: | None |
| Power Requirements - machine: | 115V or 230V, 50/60Hz |
| Power requirements - cabinet: | 208/230V, 20A, 50/60Hz |
| Dimensions - machine : | 30 x 21.5 x 30 inches (W x H x D) |
| Weight - machine (not shipping weight): | 177 lbs |
| Dimensions - vacuum pump cabinet: | 15.25 x 15.5 x 19.5 inches (W x H x D) |
| Weight - vacuum pump cabinet | 58 lbs |
| Warranty: | Three Year Limited |

4 & 6-Color Machine Specifications

| | |
|--|--|
| Feeder Plate/Stone Sizes: | 6-10-12-16-20-30-34 ss / 2-3-4-5-6-7 mm |
| Hoppers: | 4-Color 4 hoppers / 6-Color 6 hoppers |
| Working Area: | 15.7 x 15.7 inches |
| Working Speed: | Max 170 pcs/min |
| Number of Color: | 4 Color - 6 Color depending on machine model |
| Internal Design Memory: | 1000 Designs |
| Data Interface: | SD Memory Card (Max 2GB), LAN |
| Air Requirements: | None |
| Power Requirements: | AC208-230V, 50/60Hz |
| Dimensions(W x H x D): | 40 x 51 x 33 inches |
| Weight (uncrated - not shipping weight): | 4-color: 475 lbs / 6-color: 518 lbs |
| Warranty: | Three Year Limited |



DECOR
RHINESTONE MACHINES
www.BlingMachine.com

MESA
DISTRIBUTORS, INC.
www.MESADist.com
800-456-3727